

Clarksville Tree Board  
11, May 2022 @ 4:00 PM  
**4<sup>th</sup> Floor Staff Conference Room**  
**City Hall**

Agenda

4:00: Call to order—Wes Powell

Adoption of minutes from previous meeting.

Continuing business:

1. City Forester Update – Kathrine
  - a. Downtown TAEP Grant tree replacement
  - b. Riverside Dr. trees
  - c. New TAEP Grant project
  - d. Plant a Tree for Tennessee re-cap

Old business:

1. Downtown Market dates
  - a. June 11 for Corny Cob Day and July 16 for Flower Fest
  - b. Potential other dates are June 4, July 2, July 9, Aug 6, Aug 20, Sept 3
2. Tree Board Budget Request- any updates?
3. Tree Board Member Roles
  - a. Special Event Planner
  - b. Educational Outreach Planner

New business:

1. Big Tree Contest and Landmark Tree Program
  - a. May need to update our flyer for this with the addition of the Landmark Tree Program
  - b. Need a new nomination form
    - i. QR code to the form for booth at Markets
2. Need to set our fall Arbor Day Celebration Date
3. Decide what trees to order for the Arboretum
  - a. We will need 7 species

Other business:

Public Comments:

Next meeting: **8, June 2022 at 4:00 p.m. 4<sup>th</sup> Floor Mayor's Conference Room, City Hall**

c. 5:00: Adjourn

Minutes April 13, 2022

In attendance: Wes Powell, Linda Friend, Brian Beuscher, Alexandra Wills, Karla Gargus, Kathrine Killebrew, Michael Plamore, Cindy Miller, Karen Reynolds

Meeting called to order by Wes. Minutes from last meeting approved. Wes introduced Karen Reynolds, representative from City Council.

Katherine reported that the downtown tree replacement has two trees left to be finished. Still awaiting trees for the Riverside planting. Plant a tree for Tennessee pickup will be April 23<sup>rd</sup> at Pettus Park. Volunteers are needed. Wes and Katie will be there. Online ordering finishes April 17<sup>th</sup>.

Art contest winners were announced on Facebook. We will try to get on the agenda for the May City Council meeting so winners can be recognized publicly.

Wes reported on budget requests submitted totaling \$57,000.

- Canopy survey \$3000

- City Inventory and Management software, ArborPro \$49,500

- Educational and promotional items \$1,000

- Tree Board member continuing education \$1,000

Michael Palmore questioned whether the Canopy Survey and Inventory Management software could be done at less costs, or spread out over successive years. Michael has asked for justification for both these surveys. Wes will gather some statistical info. Michael also questioned of what use the results would be.

Karla, Katie and Karen Reynolds each spoke on positive knowledge to be gained by these studies. Offered were: Comparing tree equity by neighborhood, assessing tree health, observing runoff patterns. Helping with flood control, and observing the tree canopy patterns and depth compared to the last study done years ago.

Michael suggested sharing the cost of these studies with another organization. Karen Reynolds suggested looking at a possible Community Health Organization Grant. Katherine said she will check into grant possibilities.

Katherine also mentioned that dying trees on city property will be replaced.

Wes is going to contact Sheela Clark, board member, with his suggestion to combine special events chair position with Educational Outreach and it was decided to offer her this combined position. If she accepts, it will be voted on at May meeting.

Linda began a discussion about the county project to widen Rossvie road. This has been a controversial topic in the community surrounding the acquisition of land from McGraw farms which is home to a 150 year old oak tree. While it is not the board's place to take sides on this matter, Wes encourages anyone who has an opinion to voice it through any of the available platforms. Karla and Katie did mention that the tree was not in great shape and had quite a bit of rot and dead wood.

Page 2 April minutes, 2022

The Big Tree Contest will run May through October. It will be promoted at the summer downtown market. We will go out and verify the size and species of the trees next year and the winners will be announced that winter.

We run a booth at the Downtown Market, which is very popular. Board members are encouraged to volunteer to help out. We need to get a list of dates from Parks and Rec for the downtown markets and when we could have a table. Preferably in conjunction with the Master Gardeners and Bee Keepers. Karla and Katie will reach out for the dates to discuss at the May meeting.

Upcoming events for the next month are APSU Plant the Campus Red on April 21, Master Gardeners Plant Sale on April 30, APSU Native Plant Sale now through April 30 (online orders only).

Katie also mentioned that Forestry will participate in the Mayor's Summer Night Lights program on June 27 and July 13. She will be using some of our promotional items for the kids. We will probably need to order more for this and the markets.

We will possibly add the Heritage Trees to the big tree survey.

We run a booth at the Downtown Market Days. We share it with Honey bee folks and the Master Gardeners. It is very popular. Board members are encouraged to volunteer to help out. Dates still in question.

Do dragonflies help to control mosquitoes?

Meeting adjourned 5:00 or so.

Respectfully submitted, Linda Friend.



### CLARKSVILLE MONTGOMERY CO. BIG TREE CONTEST

The Clarksville Tree Board invites the public to help locate big, old trees for Montgomery County's big tree inventory. **To nominate a potential winner, complete the form below as accurately as possible, using the instructions on the back. Please submit a photo and/or leaf sample to assist with the correct species identification.** Measurements do not have to be perfect; a Tree Board expert will verify nominated contenders.

**Entries should be postmarked by: 30 November, 2016**

The contest aims to involve the public in developing our large tree inventory while raising awareness of the benefits trees provide to our area. Trees reduce air and water pollution, shade and cool buildings and increase the beauty and livability of our community.

Species may include, but are not limited to:

Ash	Chestnut	Fir	Holly	Oak	Persimmon	Spruce
Beech	Cottonwood	Gum	Locust	Osage	Pine	Sycamore
Cedar	Dogwood	Hackberry	Magnolia	Pawpaw	Poplar	Walnut
Cherry	Elm	Hickory	Maple	Pecan	Redbud	ETC...

Send nomination form and photo or leaf sample to:

Clarksville Tree Board  
C/o City Forester  
102 Public Square  
Clarksville, TN 37040

---

#### BIG TREE NOMINATION FORM

Species name: \_\_\_\_\_ Botanical name: \_\_\_\_\_

Tree Location: \_\_\_\_\_

Circumference at 4.5 ft. above ground level: \_\_\_\_\_ Crown width: \_\_\_\_\_ Height: \_\_\_\_\_

Nominated by: \_\_\_\_\_

Address: \_\_\_\_\_ Phone: \_\_\_\_\_

Tree Owner: \_\_\_\_\_

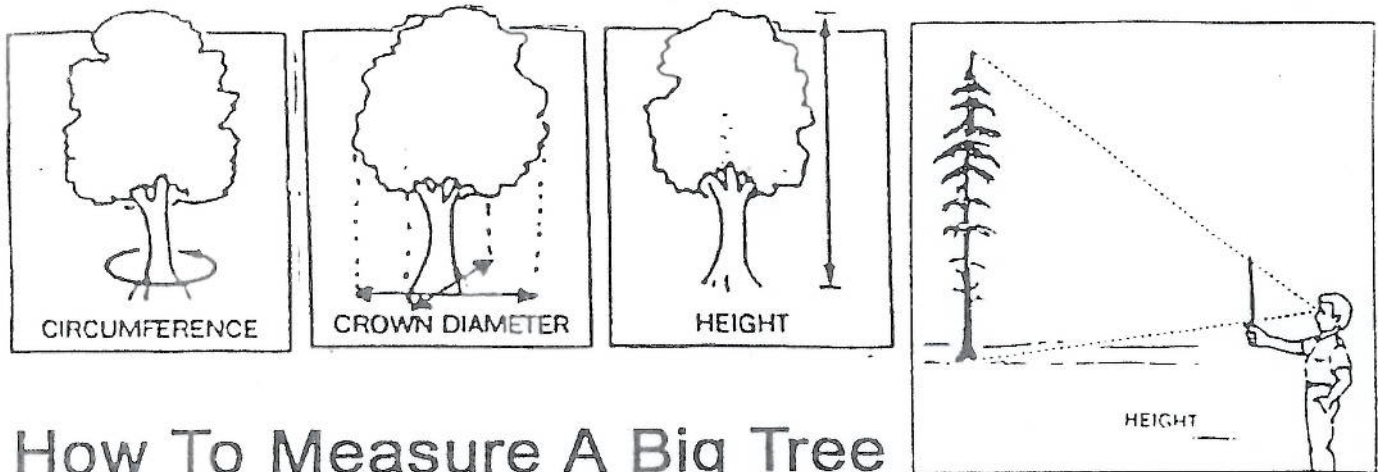
Address: \_\_\_\_\_ Phone: \_\_\_\_\_

---

DO NOT WRITE IN THE SECTION BELOW – TO BE COMPLETED BY TREE BOARD MEMBER

Verified by: \_\_\_\_\_ Date \_\_\_\_\_

TOTAL POINTS: \_\_\_\_\_ [Circumference (inch) + .25 crown (feet) + height (feet) = Pts]



## How To Measure A Big Tree

To do a preliminary check for a champion-quality tree, you need a long piece of string, a tape measure, a stick as long as your arm, and four sticks for stakes.

### CIRCUMFERENCE:

1. Measure the circumference of the trunk at 4 1/2 feet above the ground on the uphill side of the tree, using the long string. Measure the string in inches.

### CROWN/BRANCH WIDTH:

1. Look for the widest part of the crown and mark the branch ends by placing two markers in the ground. Measure between the markers.
2. Find the narrowest part of the crown and mark the ends of its branches.
3. Measure the two distances between the two pairs of stakes. Add the two distances and divide by two to get the average width of the crown.

### HEIGHT:

1. With your arm extended, hold a stick upright in one hand, directly in front of your face. Have someone measure the distance from the bridge of your nose (between the eyes) to the stick. Hold the stick so that the length of the stick from the top of your hand to its top end is equal to the distance from your eyes to the top of your hand.
2. Holding the stick straight up and down at arm's length, walk toward or away from the tree so that with head held still, arm is level with the ground, the bottom of the tree lines up with the top part of your hand holding the stick, and the top of the tree lines up with the top of the stick (see diagram above). Hold the head and arm still, and move your eyes only to line up the tree.
3. The distance you are standing away from the tree is the approximate height of the tree.

<i>Acer griseum</i>	Paperbark Maple	
<i>Acer negundo</i>	Boxelder	Broken/ needs replacement 04/28/20
<i>Acer palmatum</i>	Japanese Maple	
<i>Carya illinoensis</i>	Pecan	
<i>Catalpa speciosa</i>	Northern Catalpa	
<i>Celtis occidentalis</i>	Common Hackberry	
<i>Cercis canadensis</i>	Eastern Redbud	
<i>Chionanthus retusus</i>	Chinese Fringe	
<i>Cladrastis kentukea</i>	American Yellowwood	
<i>Fraxinus americana</i>	White Ash	
<i>Ginkgo biloba</i>	Ginkgo	
<i>Ilex opaca</i>	American Holly	
<i>Juniperus virginiana</i>	Eastern Redcedar	Removed due to storm damaged 04/28/2020
<i>Liquidambar formosana</i>	Formosan Sweetgum	
<i>Liriodendron tulipifera</i>	Tulip Poplar	
<i>Magnolia virginiana</i>	Sweetbay Magnolia	
<i>Magnolia x soulangeana</i>	Saucer Magnolia	
<i>Oxydendrum arboreum</i>	Sourwood	(smashed by storm) need replacement
<i>Pinus palustris</i>	Longleaf Pine	
<i>Platanus occidentalis</i>	Sycamore	
<i>Taxodium distichum</i>	Common Baldcypress	
<i>Ulmus americana</i>	American Elm	
<i>Ulmus crassifolia</i>	Cedar Elm	
<i>Ulmus thomasii</i>	Rock Elm	
<i>Zelkova serrata</i>	Japanese Zelkova	
<i>Acer saccharinum</i>	Silver Maple	
<i>Glymnocladus dioicus</i>	Kentucky Coffee	
<i>Ulmus parvifolia</i>	Chinese Elm	
<i>Prunus xcistena</i>	Purpleleaf Sand Cherry	
<i>Quercus macrocarpa</i>	Bur Oak	